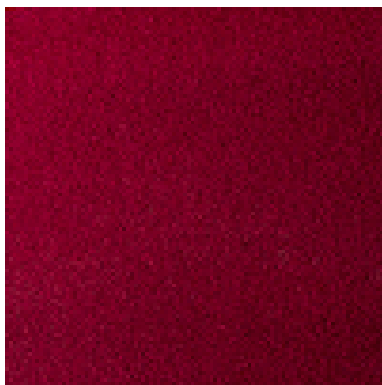
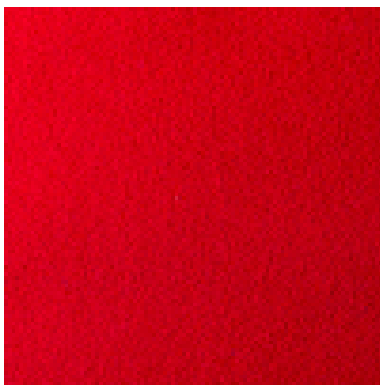


# Carnival

Bordeaux  
CAR820



Carmine  
CAR821



Coral  
CAR822



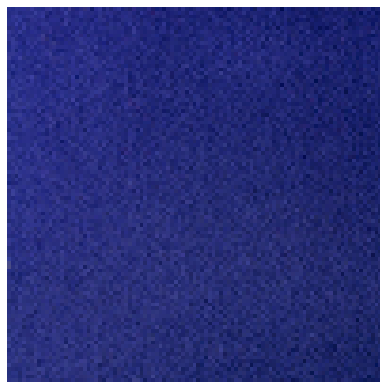
Dusk  
CAR823



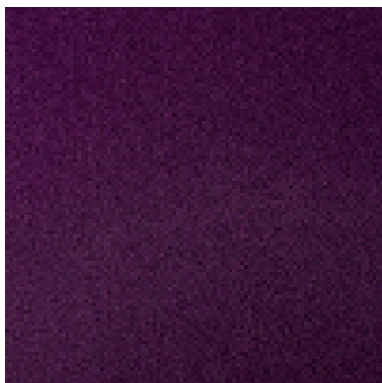
Fondant  
CAR824



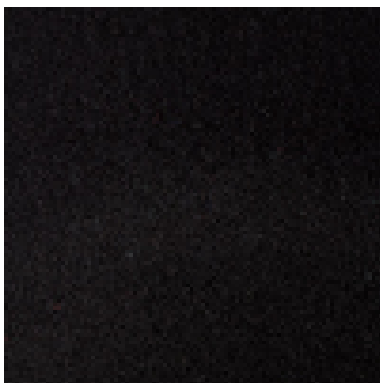
Inca  
CAR825



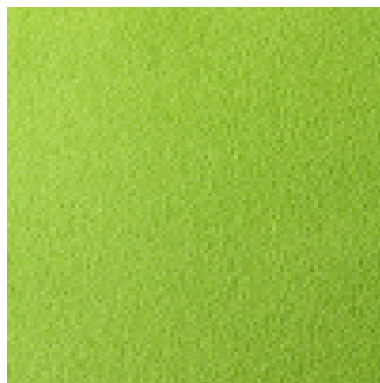
Iris  
CAR826



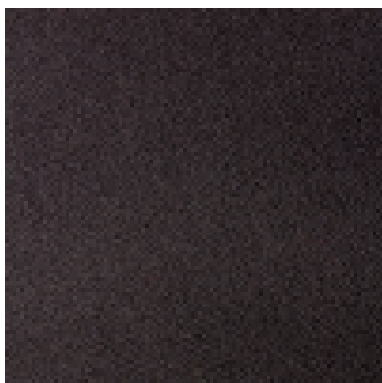
Jet  
CAR827



Kiwi  
CAR828



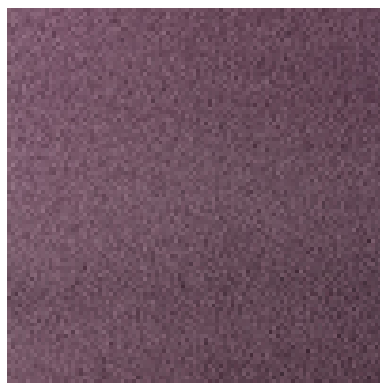
Lava  
CAR829



Malibu  
CAR830



Mocha  
CAR831



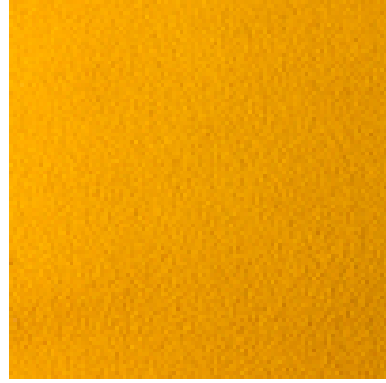
Paprika  
CAR832



Regal  
CAR833



Saffron  
CAR834



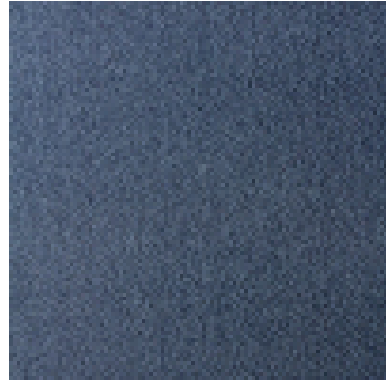
Sea  
CAR835



Silver  
CAR836



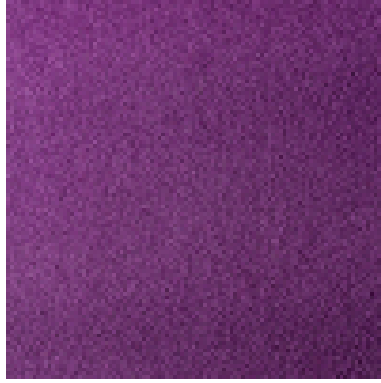
Slate  
CAR837



Spruce  
CAR838



Thistle  
CAR839



Ultra  
CAR840



Yacht  
CAR841



**Application:**

Upholstery Fabric

**Composition:**

80% Virgin Wool, 20% Nylon

**Width:**

140cm ± 2%

**Weight:**

370gms/m<sup>2</sup> ± 5%

**Abrasion:**

Tested in accordance with BS EN ISO 12947-2 1999 as modified by Annex F of BS 2546:2004 to 240,000 rubs Martindale.

Meets the requirements of BS 2543:2004 and has been graded 'SEVERE CONTRACT' suitable for all types of upholstery use and classification 24/7 usage.

**With a 5 year gurantee****Flame Retardancy:**

BS EN 1021-1:2006 (Cigarette).

BS EN 1021-2:2006 (Match).

BS 7166.2007 Low Hazzard

BS 7166.2007 Medium Hazzard

BS 5852:2006 Ignition source 5

Note: Flammability performance is dependant on foam used.

**Light Fastness:**

BS EN ISO (105 - BO2:1999)

**Fastness to Rubbing Wet & Dry:**

BS EN ISO 105 - X12:2002 - 4 - 5

**Colour Matching:**

Batch to batch variations in shade may occur within commercial tolerances. We recommend that fabric be examined before use as no claims will be considered after cutting.

**Availability:**

Generally ex-stock.

**Product Development:**

We reserve the right to change the specification of our product in line with our product development programme without notice.

**Fabric Care and Maintenance:**

Use a damp clean cloth with a solution of mild soap and lukewarm water. See our fabric care guide.

**Technical Assistance:**

Our technical staff will be pleased to offer advice on F.R. and other matters.